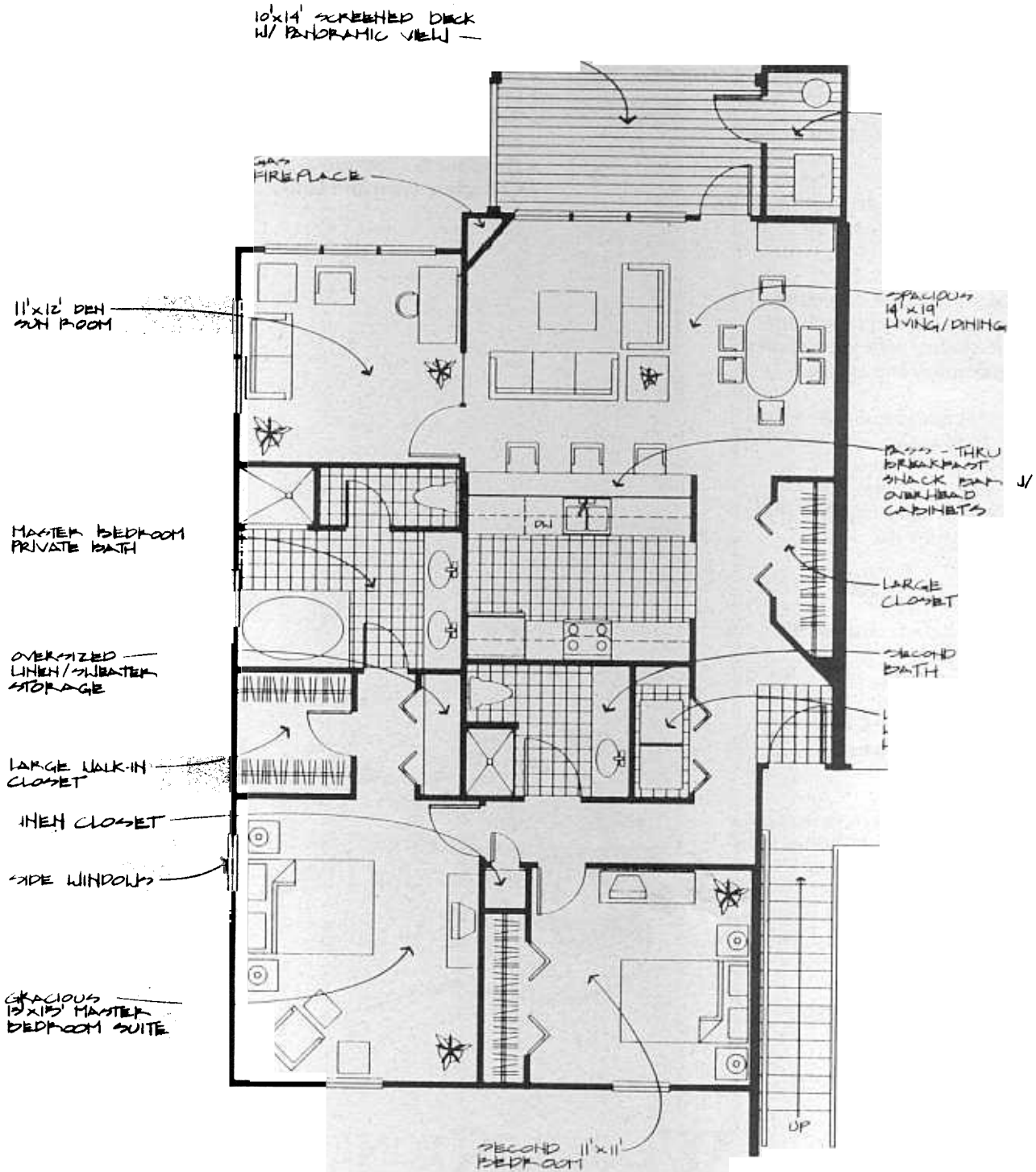




A N D O V E R

Two Bedrooms, Sun Room/Den, two Baths, Living/Dining Room, Snackbar



WEATHERSTONE
Condominium

CAMBRIDGE HOMES OF MICHIGAN INC.
3243 EAST PARIS AVE., S.E., KENTWOOD, MI 49512
June 1993

Renderings are artist concepts and may vary in detail from plans and specifications. All dimensions shown are approximate. Builder reserves the right to make minor changes if necessary to improve the product. Prices are subject to change without notice.