

## THE HARTFORD

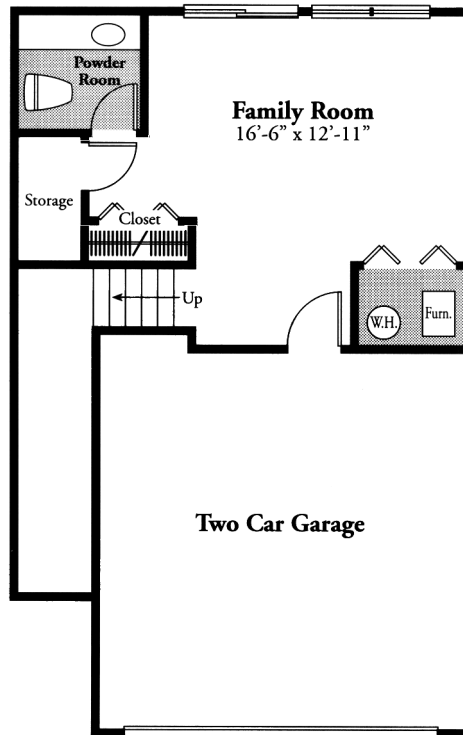
**3 Bedrooms,  
2 Full & 2 Half Baths,  
2-Car Attached Garage**

The Hartford is our largest home offering three levels of luxury. A two car garage provides protected entry to the ground level where a spacious family room features abundant natural light. A powder room, coat closet, and extra storage complete the ground floor. On the first floor, a free-flowing plan features a sunny living room with an optional fireplace, dining room, U-shaped kitchen with a convenient breakfast bar, walk-in pantry and adjoining powder room. The breakfast nook opens to a balcony for outdoor entertaining. On the upper floor, a spacious master suite offers a large walk-in closet and luxurious master bath with corner soaking tub. Two additional sun-filled bedrooms share a central bath. The washer and dryer are also conveniently located on this level.

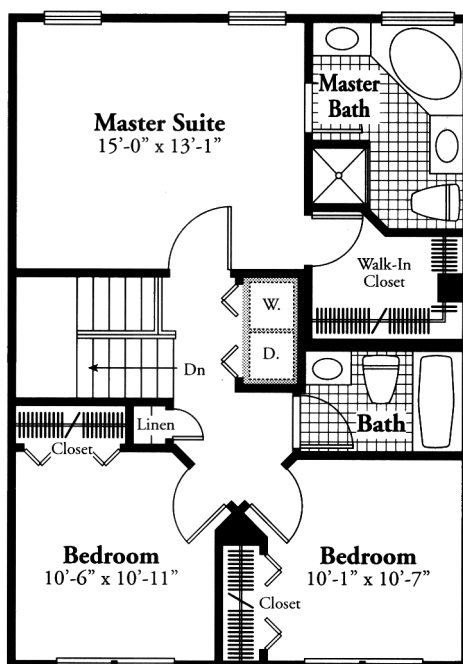


3200 Nixon Road  
Ann Arbor, Michigan 48105  
(734) 327-0400 Fax 665-0899

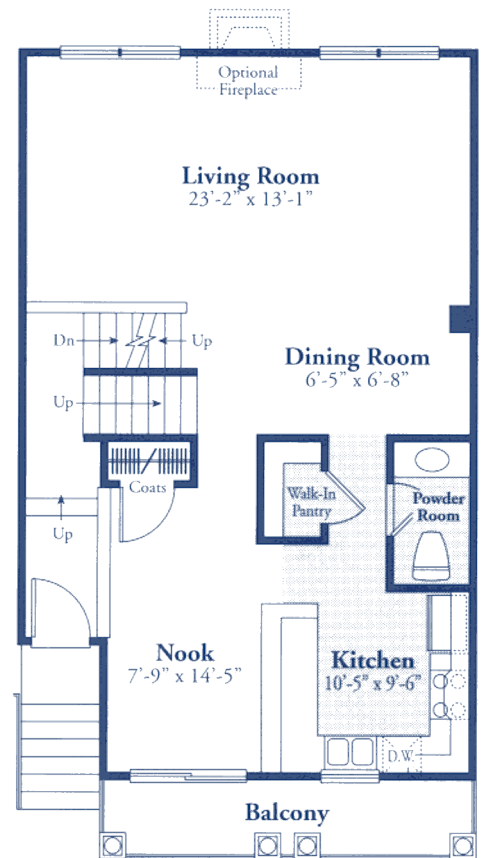
The renderings are the artist's conception. Floor plans are intended to serve as a general guide, not to accurately depict the legal description of the property's walls, boundaries, dimensions, scale of rooms or their relative locations. We cannot provide any warranties or representations that the actual and depicted descriptions will not differ. Features subject to change without notice.



*Ground Floor*



*Second Floor*



*First Floor*