

THE CONCORD

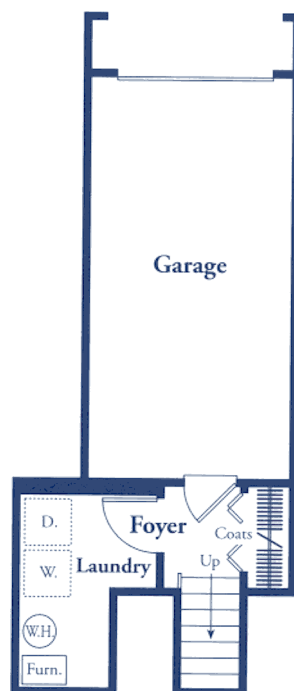
2 Bedrooms, 2 Full Baths,
Attached Garage

The Concord is our most unique floorplan. Enjoy protected entry via the private garage and ascend to the living room with its double windows overlooking the terrace. The drama increases as you step up to the loft-style dining room and the adjoining U-shaped kitchen with its convenient snack bar. The master suite includes a large walk-in closet and a private full bath. A second bedroom enjoys convenient access to adjacent full bath.

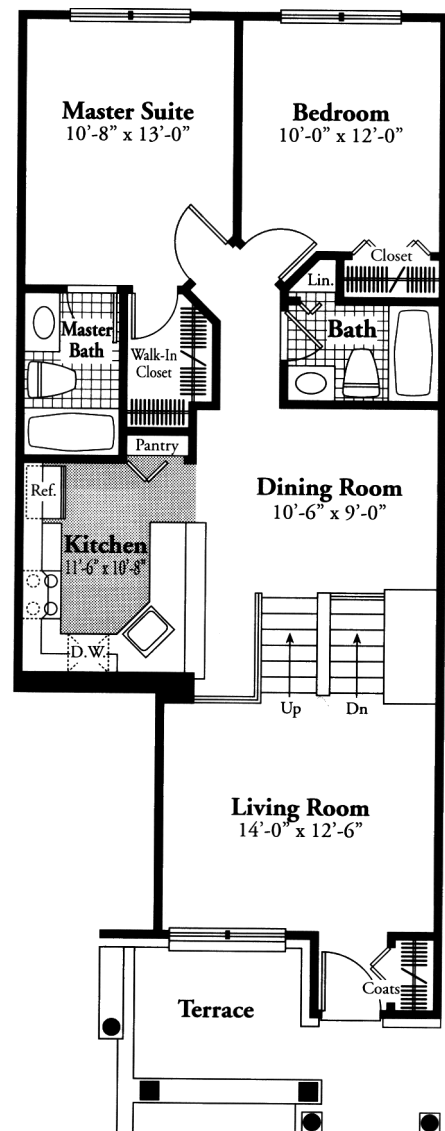


3200 Nixon Road
Ann Arbor, Michigan 48105
(734) 327-0400 Fax 665-0899

The renderings are the artist's conception. Floor plans are intended to serve as a general guide, not to accurately depict the legal description of the property's walls, boundaries, dimensions, scale of rooms or their relative locations. We cannot provide any warranties or representations that the actual and depicted descriptions will not differ. Features subject to change without notice.



Ground Floor



First Floor